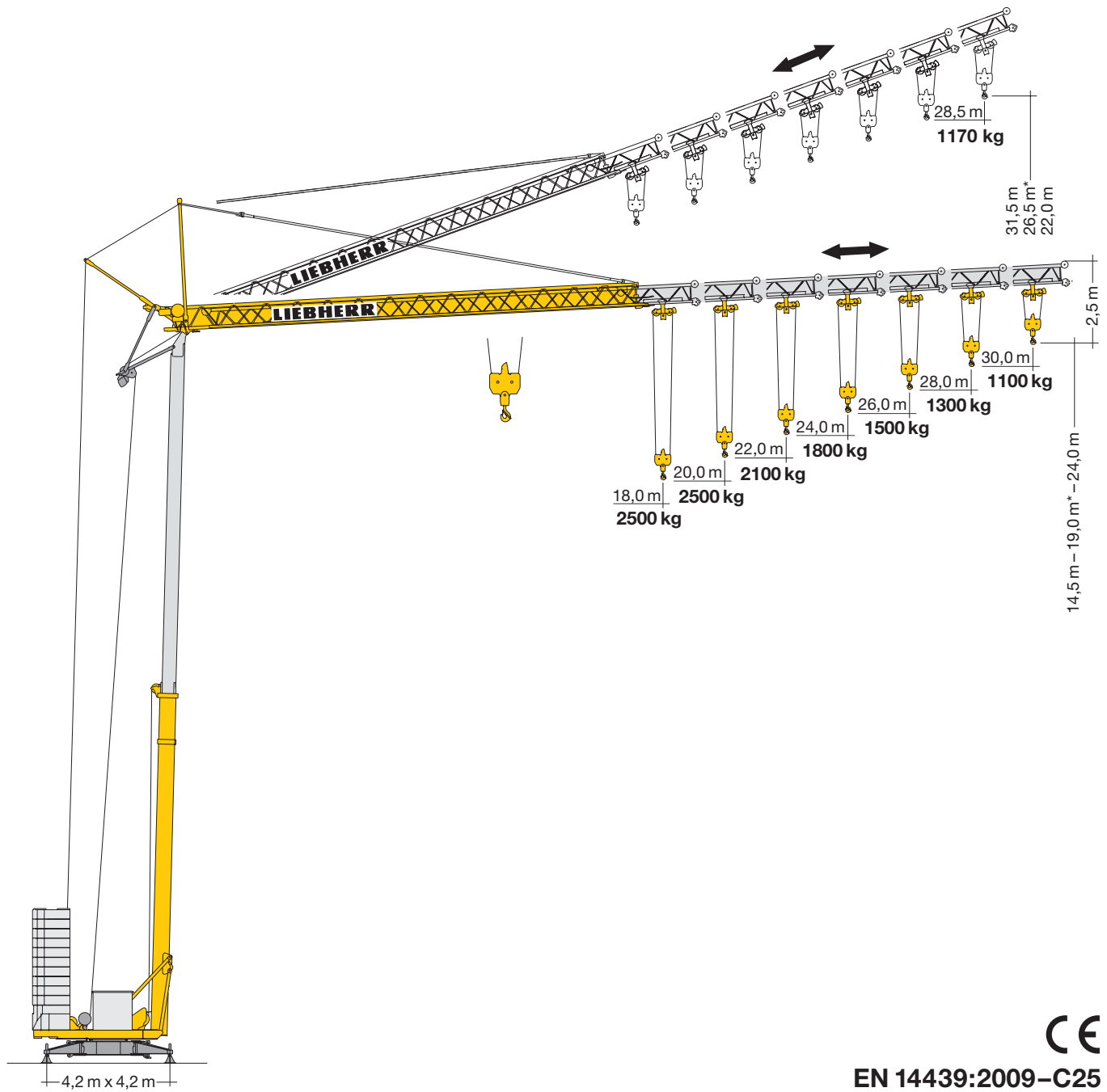


# Turmdrehkran

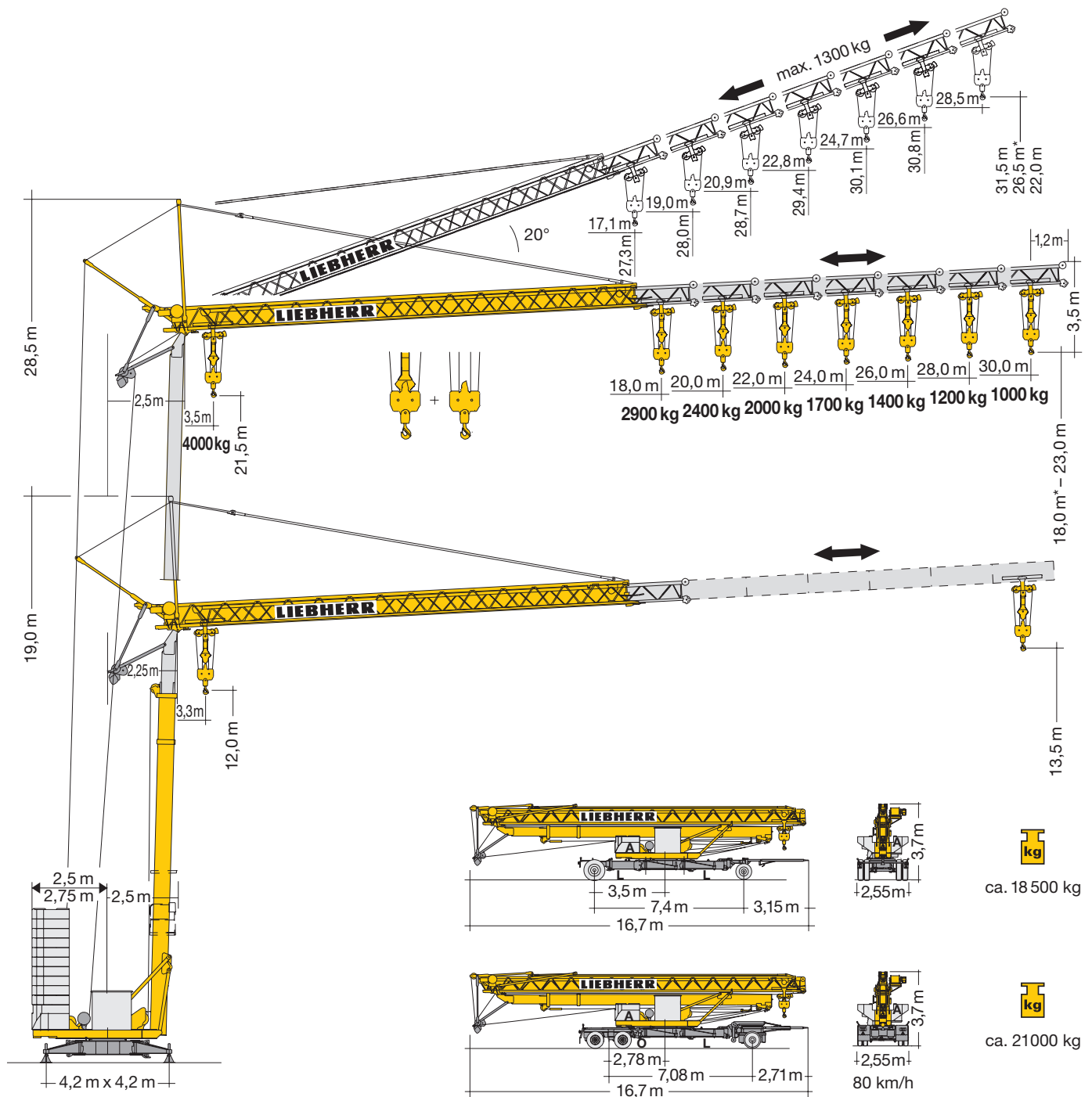
Tower Crane / Grue à tour / Gru a torre / Grúa torre  
Guindaste de torre / Башенный поворотный кран

## 32 TT

30 - 57 mt



# LIEBHERR



## Gewicht

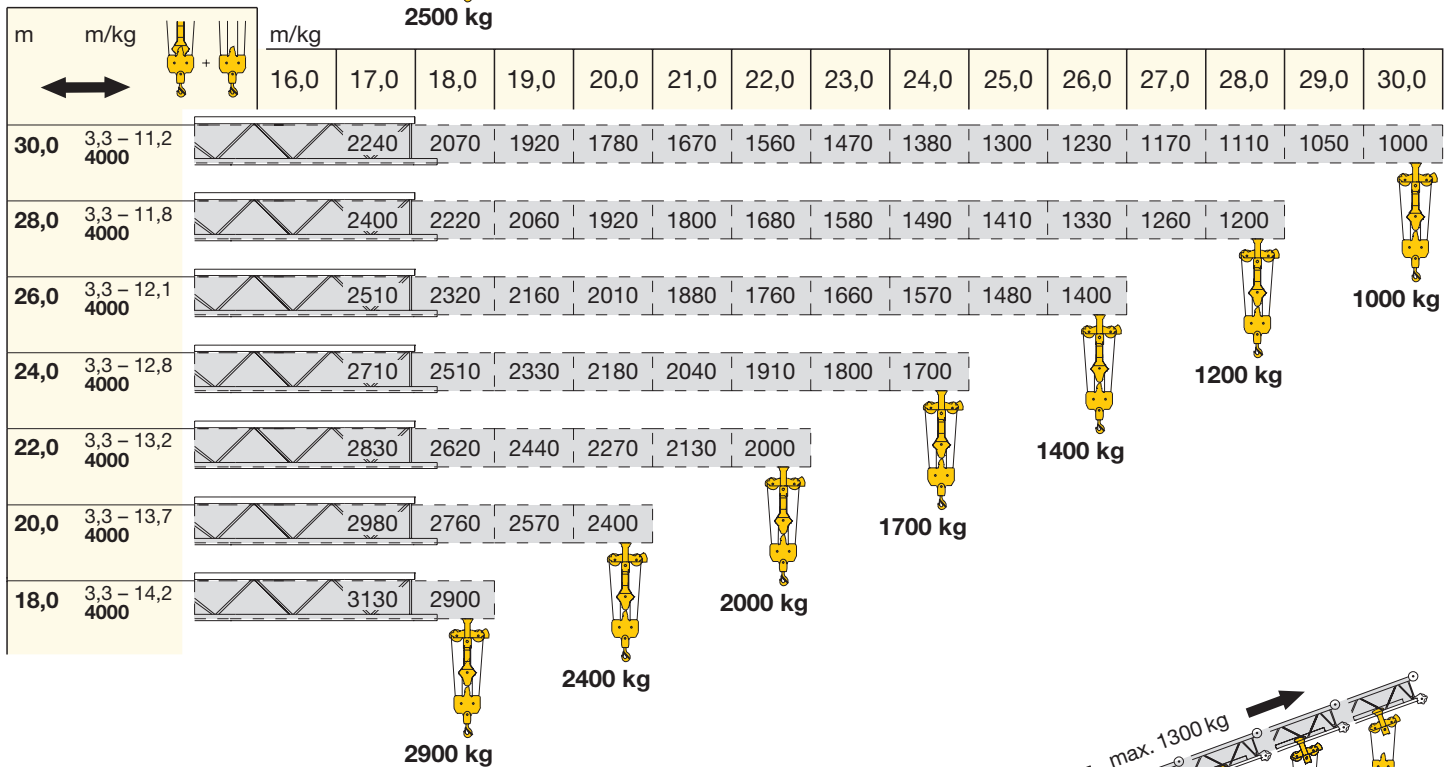
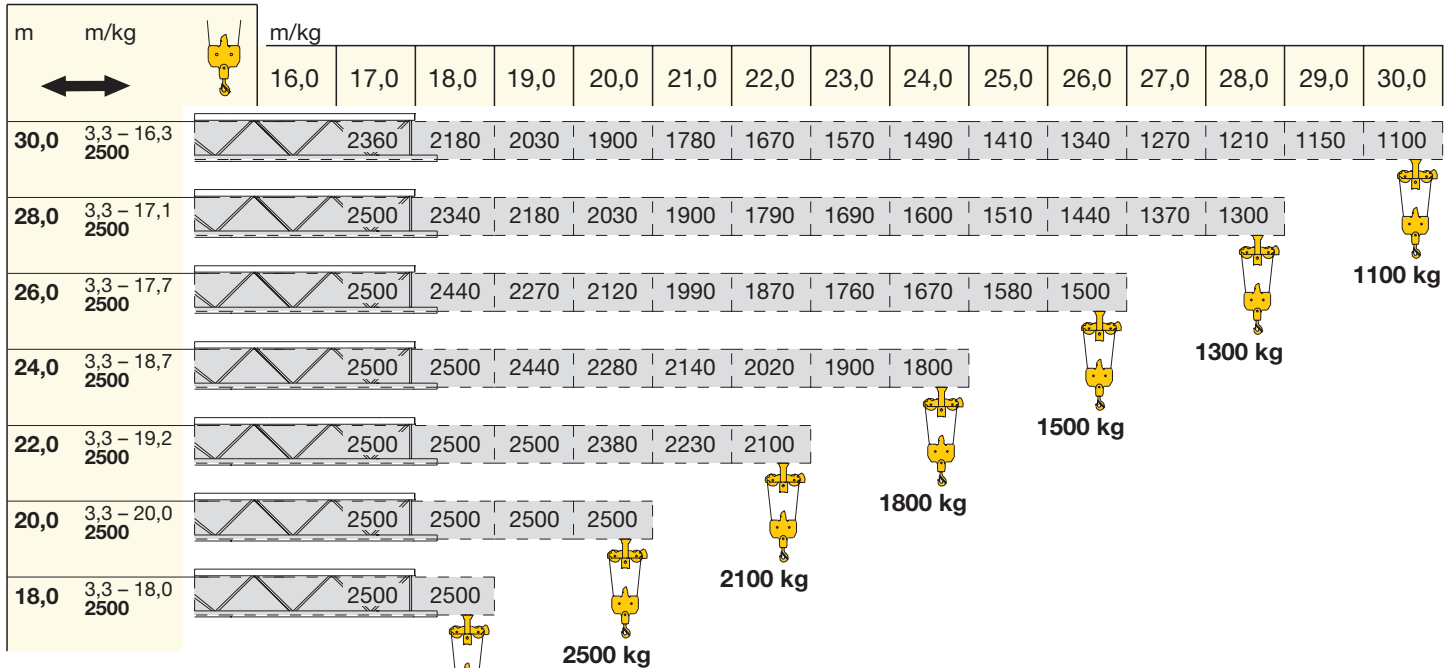
Weight / Poids / Peso / Peso / Pesos / Macca

	1 x A = 3000 kg	22250 kg	r = 2,5 m		ca. 12200 kg
	11 x B = 19250 kg				
1 x A = 3000 kg	20500 kg	r = 2,75 m			
10 x B = 17500 kg					

\* siehe Betriebsanleitung. / see instruction manual. / voir manuel de service. / vedi manuale d'istruzione. / ver manual de instrucción. / ver manual de instruções. / см. инструкцию по эксплуатации.

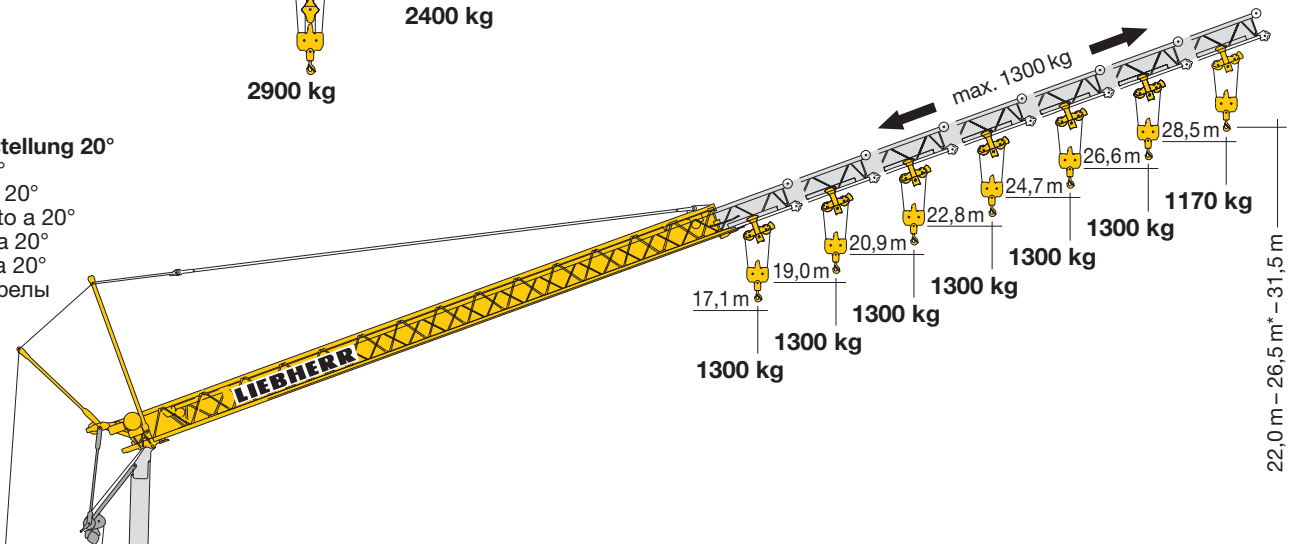
# Ausladung und Tragfähigkeit

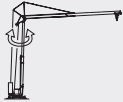

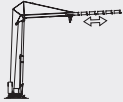

Radius and capacity / Portée et charge / Sbraccio e portata  
Alcances y cargas / Alcance e capacidade de carga / Вылет и грузоподъемность

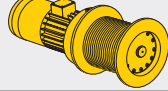

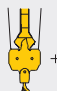

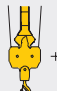



## Auslegersteilstellung 20°

Elevated jib 20°  
Flèche inclinée 20°  
Braccio inclinato a 20°  
Pluma inclinada 20°  
Lança inclinada 20°  
Положение стрелы под углом 20°



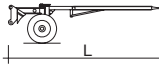
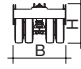
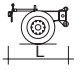
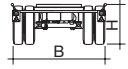
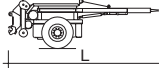
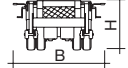
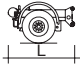
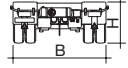
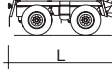
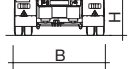
	U/min. 0 ↔ 0,8 sl./min tr./min	2,2 kW EDC
	20,0 / 40,0 m/min	2,6 / 3,5 kW
	10,0 m/min	2,6 kW
	4,0 m/min	5,0 kW

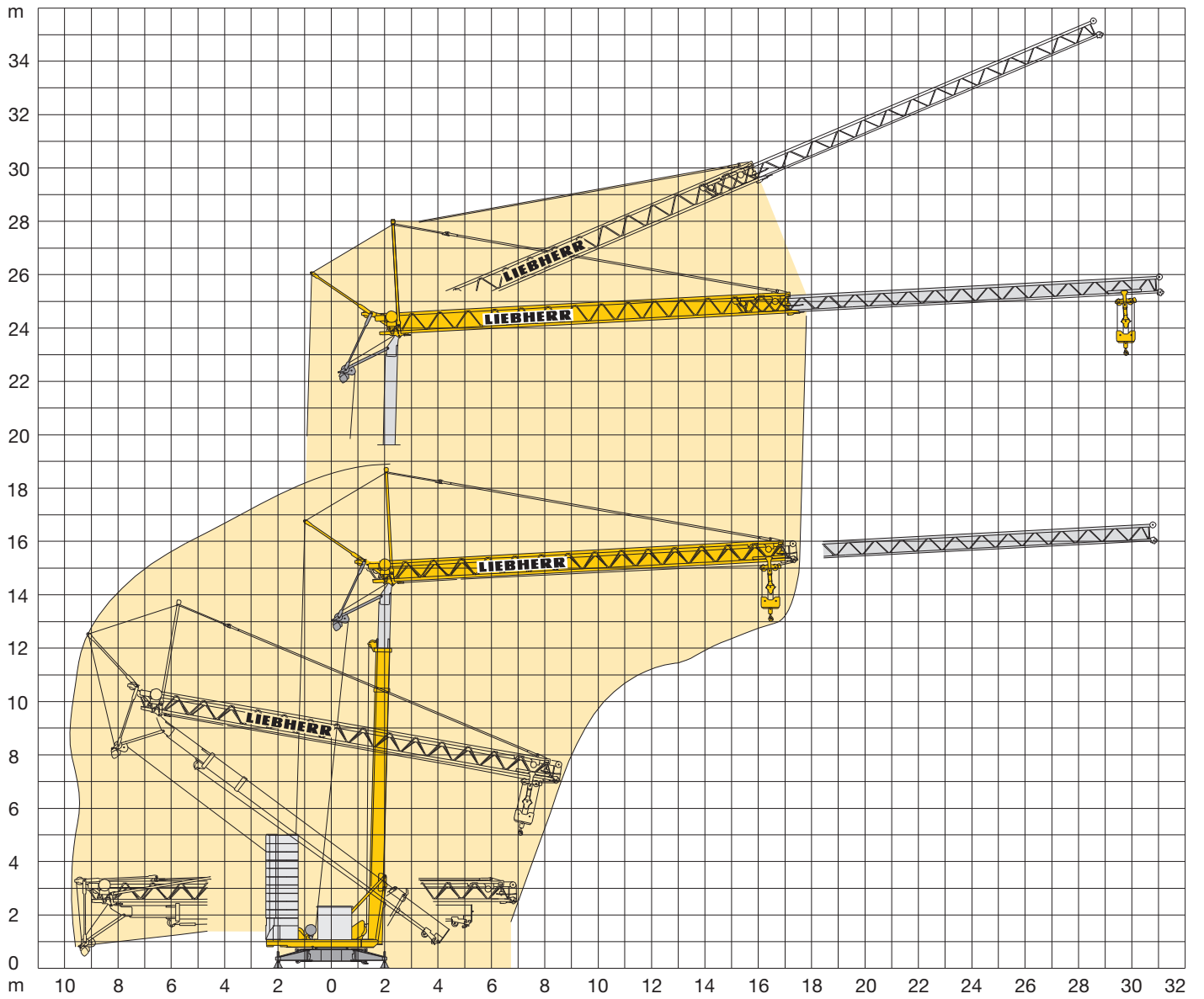
	Stufe / Step / Cran / Marcia / Velocidad Velocidade / Передача	
	kg	m/min
11,0 kW KL 	1	2500 5,0
	2	2500 20,0
	3	1300 40,0
11,0 kW FU 	1	2000 5,0 4000 2,5
	2	2000 20,0 4000 10,0
	3	1300 40,0 2600 20,0
11,0 kW FU 	1	2500 4,0
	2	2500 20,0
	3	1300 38,0
	4	1000 50,0
	1	2000 4,0 4000 2,0
	2	2000 20,0 4000 10,0
	3	1300 38,0 2600 19,0
	4	1000 50,0 2000 25,0

	400 V	Hz	kVA
50,0 m 77,0 m	4 x 6 mm <sup>2</sup> KL 4 x 6 mm <sup>2</sup> FU	50	22,0 KL 20,0 FU

## Kolli-Liste

Packing List / Liste de colisage / Lista dei colli  
Lista de contenido / Lista de embalagem / Упаковочный лист

Pos. Item Rep. Voce Pos. Ref. Pos.	Anz. Qty. Qte. Qta. Cant. Cant. Кол-во		L (m)	B (m)	H (m)	kg		
1	1	<b>Transportachse vorne Tra 100 KY 2</b> / Road transport axle front / Essieux de transport avant / Asse di trasporto anteriore / Eje delantero para transporte / Eixo de transporte dianteiro / Транспортировочная ось, передняя			4,10	1,42	1,10	750
2	1	<b>Transportachse hinten Tra 120 GY 1A</b> / Road transport axle behind / Essieux de transport arrière / Asse di trasporto posteriore / Eje trasero para transporte / Eixo de transporte traseiro / Транспортировочная ось, задняя			1,70	2,50	1,10	1100
3	1	<b>Transportachse vorne Tra 115</b> / Road transport axle front / Essieux de transport avant / Asse di trasporto anteriore / Eje delantero para transporte / Eixo de transporte dianteiro / Транспортировочная ось, передняя			4,10	2,50	1,32	1900
4	1	<b>Transportachse hinten Tra 117 GY 1A</b> / Road transport axle behind / Essieux de transport arrière / Asse di trasporto posteriore / Eje trasero para transporte / Eixo de transporte traseiro / Транспортировочная ось, задняя			1,80	2,50	1,10	1500
5	1	<b>Transportachse hinten Tra 203</b> / Road transport axle behind / Essieux de transport arrière / Asse di trasporto posteriore / Eje trasero para transporte / Eixo de transporte traseiro / Транспортировочная ось, задняя			3,0	2,50	1,05	2500



**Konstruktionsänderungen vorbehalten!** / Subject to alterations! / Sous réserves de modifications! / Riservato il diritto di modifiche strutturali!  
¡Sujeto a modificaciones! / Salvo modificação da construçao! / Права на внесение конструкторских изменений сохраняются!

**Sämtliche Angaben erfolgen ohne Gewähr.** / This information is supplied without liability. / Ces renseignements sont sans garantie. / Tutte le indicazioni fornite senza garanzia. / Declinamos toda responsabilidad derivada de la información proporcionada. / Declinamos qualquer responsabilidade quanto à informação fornecida. / Все данные указаны без обязательств.

**120 P – 5805 • EN 14439:2009 – DIN 15018-H1/B3 • BGL C.0.08.0031 • 01.10 / 7**

Printed in Germany.